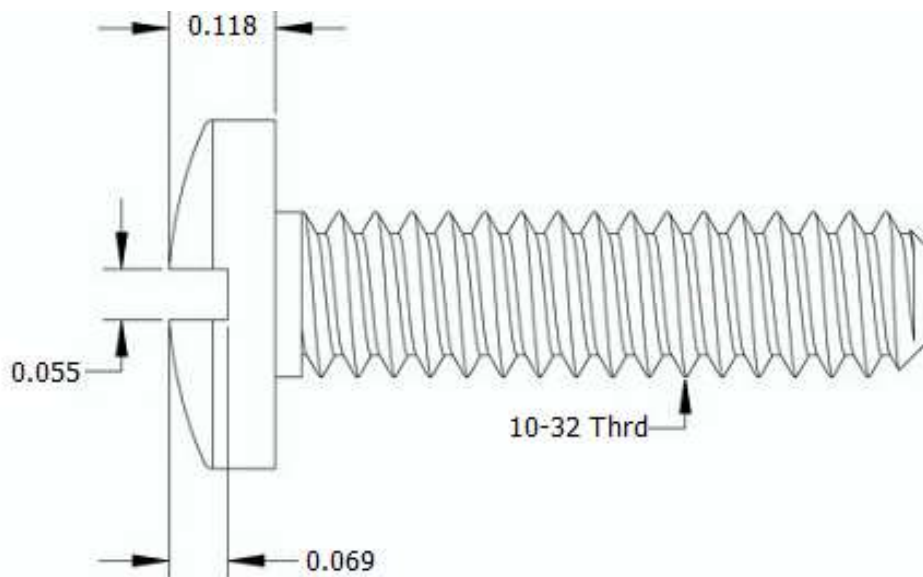
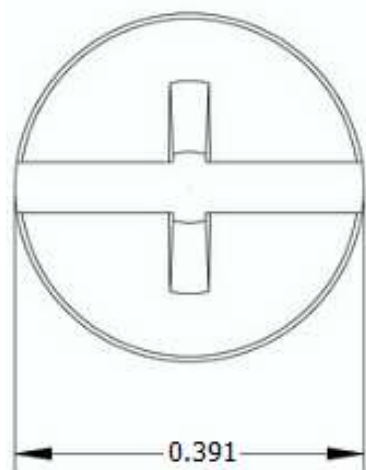



This drawing and the information contained herein are the confidential and proprietary property of Global Supply LLC



PART NUMBER	LENGTH
10F64MCBN	1
10F68MCBN	1 1/16
10F80MCBN	1 1/4
10F88MCBN	1 3/8
10F96MCBN	1 1/2
10F104MCBN	1 5/8
10F112MCBN	1 3/4
10F128MCBN	2

NOTES:

1. INTERPRET DRAWINGS PER ASME Y14.5M-1994 STANDARD.
2. DIMENSIONS & TOLERANCES PER ANSI/ASME B18.6.3.
3. ROHS AND REACH COMPLIANT

DRAWING SCALE:			MATERIAL:		DESCRIPTION:	
STANDARD			NYLON		10-32 COMBO BINDER HEAD MACHINE SCREW	
TOLERANCES: <i>Unless specified otherwise, all dimensions are in inches</i>		x.xxx +/- 0.005 x.xx +/- 0.010 x.x +/- 0.010	FINISH:		PART NUMBER:	
			PLAIN		10FXXMCBN	
DRAWN BY:		L CLARY		FSCM No.		<div><div>Global Supply LLC</div><div>WORLDWIDE SUPPLIER OF ELECTRONIC HARDWARE, FASTENERS & COMPONENTS</div><div>500 Division Street, Campbell, CA 95008-6906 Tel: 408 960 0370 Fax: 408 960 0375 Web: www.globalsupply.com</div></div>
REV:		APPROVAL	DATE:	67012		
INITIAL RELEASE		LJA	Jul 2, 2018			
				ECCN		
				EAR99 = NLR (No License Required)		