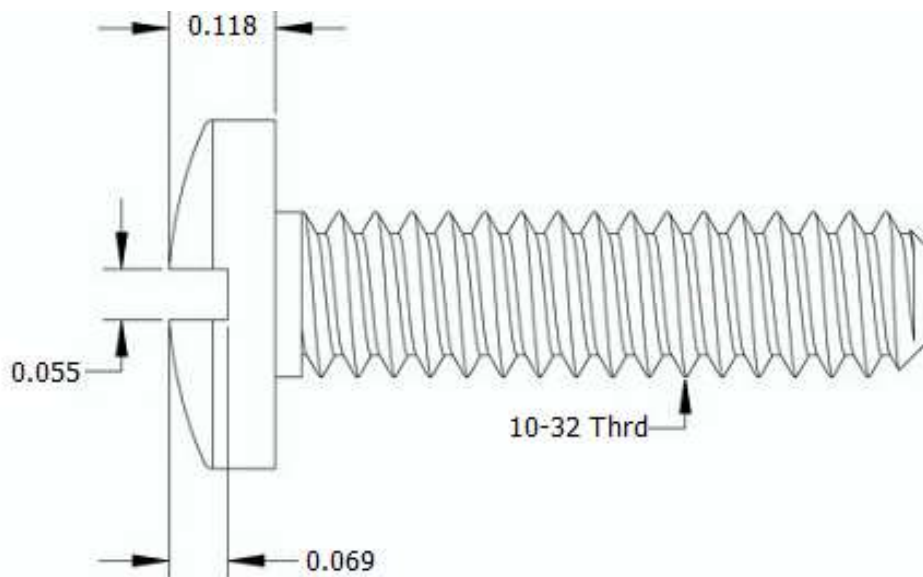
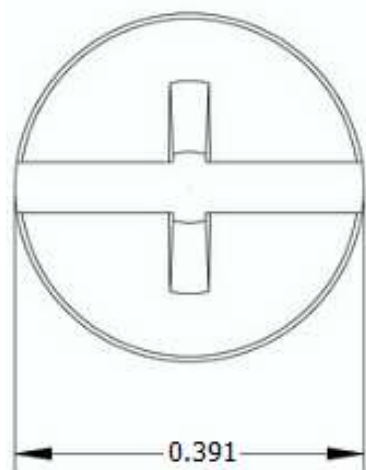



This drawing and the information contained herein are the confidential and proprietary property of Global Supply LLC



PART NUMBER	LENGTH
10F8MCBN	1/8
10F12MCBN	3/16
10F16MCBN	1/4
10F20MCBN	5/16
10F24MCBN	3/8
10F28MCBN	7/16
10F32MCBN	1/2
10F40MCBN	5/8
10F48MCBN	3/4
10F52MCBN	13/16
10F56MCBN	7/8

NOTES:

1. INTERPRET DRAWINGS PER ASME Y14.5M-1994 STANDARD.
2. DIMENSIONS & TOLERANCES PER ANSI/ASME B18.6.3.
3. ROHS AND REACH COMPLIANT

DRAWING SCALE:		MATERIAL:		DESCRIPTION:	
STANDARD		NYLON		10-32 COMBO BINDER HEAD MACHINE SCREW	
TOLERANCES: <i>Unless specified otherwise, all dimensions are in inches</i>		FINISH: PLAIN		PART NUMBER: 10FXXMCBN	
x.xxx +/- 0.005 x.xx +/- 0.010 x.x +/- 0.010		FSCM No. 67012 ECCN EAR99 = NLR (No License Required)		 Global Supply LLC WORLDWIDE SUPPLIER OF ELECTRONIC HARDWARE, FASTENERS & COMPONENTS <small>500 Division Street, Campbell, CA 95008-6906 Tel: 408 960 0370 Fax: 408 960 0375 Web: www.globalsupply.com</small>	
DRAWN BY:	L CLARY				
REV:	APPROVAL				
DATE:					
INITIAL RELEASE	LJA				