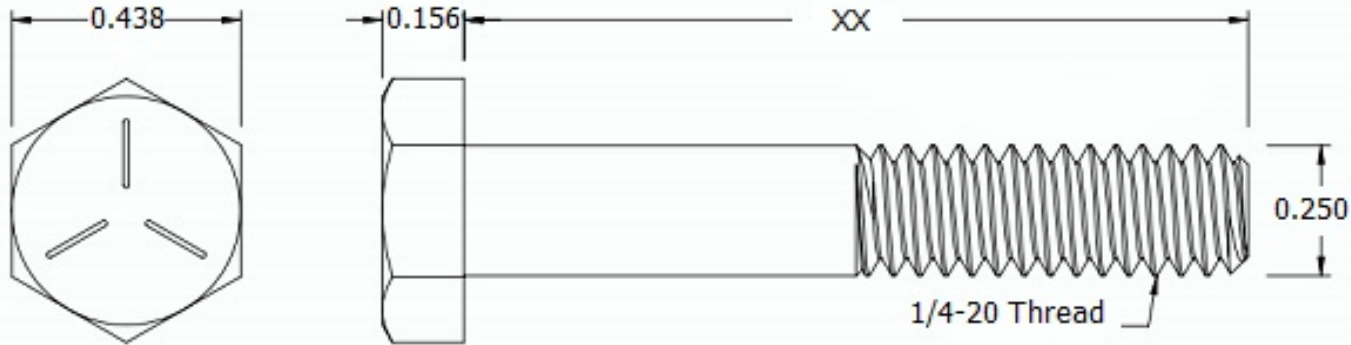
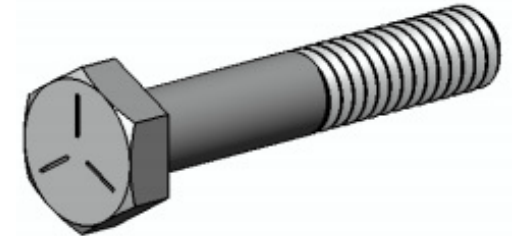



This drawing and the information contained herein are the confidential and proprietary property of Global Supply LLC



PART NUMBER	LENGTH
25C64HCS5	1
25C80HCS5	1 1/4
25C96HCS5	1 1/2
25C112HCS5	1 3/4
25C128HCS5	2
25C160HCS5	2 1/2
25C192HCS5	3
25C224HCS5	3 1/2
25C240HCS5	3 3/4
25C256HCS5	4
25C272HCS5	4 1/4
25C320HCS5	5
25C352HCS5	5 1/2



NOTES:
 1. INTERPRET DRAWINGS PER ASME Y14.5M-1994 STANDARD.
 2. DIMENSIONS & TOLERANCES PER ANSI/ASME B18.2.1
 3. ROHS AND REACH COMPLIANT

DRAWING SCALE: STANDARD		MATERIAL: GRADE 5 STEEL	DESCRIPTION: 1/4-20 HEX HEAD CAP SCREW
TOLERANCES: <i>Unless specified otherwise, all dimensions are in inches</i>	x.xxx +/- 0.005 x.xx +/- 0.010 x.x +/- 0.010	FINISH: PLAIN	PART NUMBER: 25CXXHCS5
DRAWN BY: LCLARY	FSCM No. 67012		 Global Supply LLC WORLDWIDE SUPPLIER OF ELECTRONIC HARDWARE, FASTENERS & COMPONENTS <small>500 Division Street, Campbell, CA 95008-6906 Tel: 408 960 0370 Fax: 408 960 0375 Web: www.globalsupply.com</small>
REV:	APPROVAL	DATE:	
INITIAL RELEASE	LJA	May 31, 2018	
		ECCN EAR99 = NLR (No License Required)	