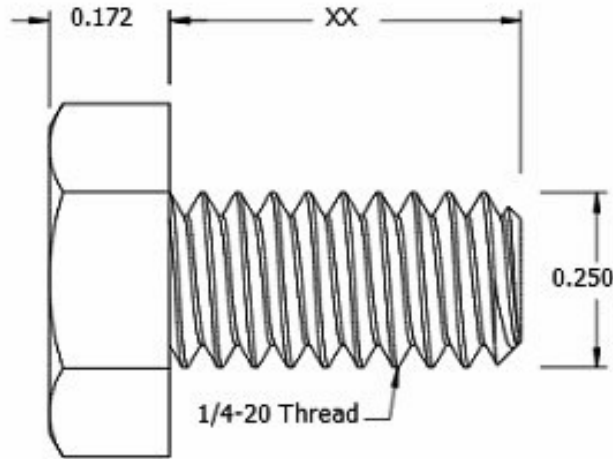
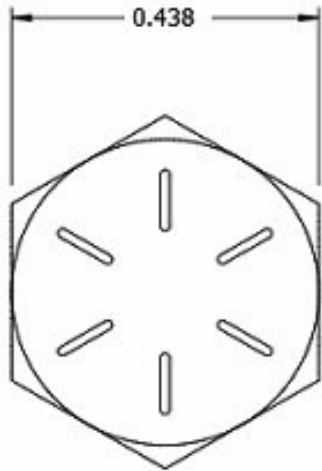
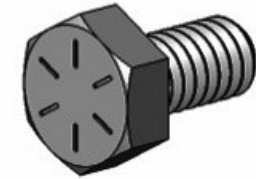



This drawing and the information contained herein are the confidential and proprietary property of Global Supply LLC



PART NUMBER	LENGTH
25C4HCS8Y	1/16
25C8HCS8Y	1/8
25C12HCS8Y	3/16
25C16HCS8Y	1/4
25C20HCS8Y	5/16
25C24HCS8Y	3/8
25C28HCS8Y	7/16
25C32HCS8Y	1/2
25C40HCS8Y	5/8
25C48HCS8Y	3/4



NOTES:
 1. INTERPRET DRAWINGS PER ASME Y14.5M-1994 STANDARD.
 2. DIMENSIONS & TOLERANCES PER ANSI/ASME B18.2.1
 3. ROHS AND REACH COMPLIANT

DRAWING SCALE:		MATERIAL:		DESCRIPTION:							
STANDARD		GRADE 8 STEEL		1/4-20 HEX HEAD CAP SCREW							
TOLERANCES: <i>Unless specified otherwise, all dimensions are in inches</i>		FINISH:		PART NUMBER:							
<table border="0"> <tr> <td>x.xxx</td> <td>+/- 0.005</td> </tr> <tr> <td>x.xx</td> <td>+/- 0.010</td> </tr> <tr> <td>x.x</td> <td>+/- 0.010</td> </tr> </table>		x.xxx	+/- 0.005	x.xx	+/- 0.010	x.x	+/- 0.010	ZINC II		25CXXHCS8Y	
x.xxx	+/- 0.005										
x.xx	+/- 0.010										
x.x	+/- 0.010										
DRAWN BY:	LCLARY		FSCM No. 67012		 Global Supply LLC WORLDWIDE SUPPLIER OF ELECTRONIC HARDWARE, FASTENERS & COMPONENTS <small>500 Division Street, Campbell, CA 95008-6906 Tel: 408 960 0370 Fax: 408 960 0375 Web: www.globalsupply.com</small>						
REV:	APPROVAL	DATE:									
INITIAL RELEASE	LJA	Jun 4, 2018									
			ECCN								
			EAR99 = NLR (No License Required)								