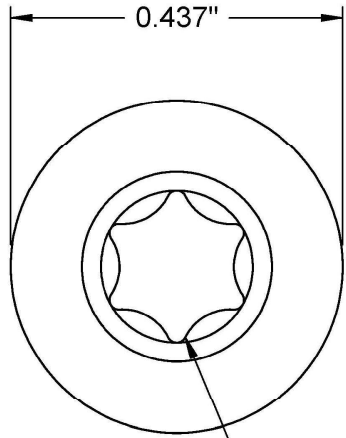
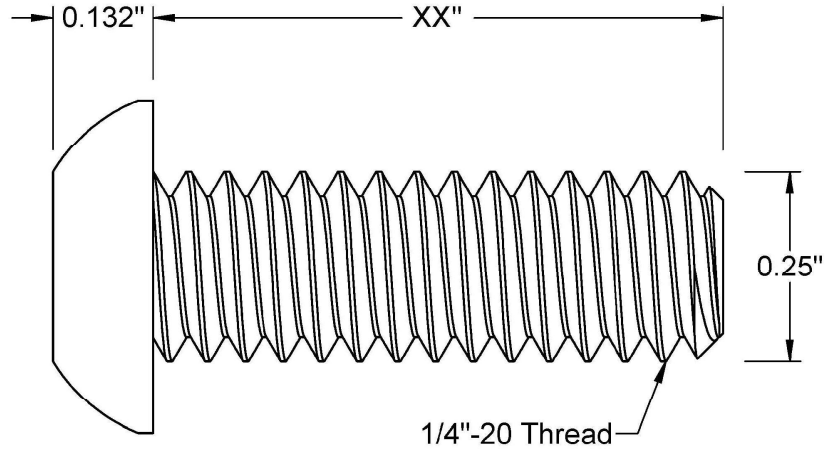


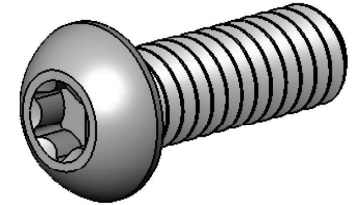
This drawing and the information contained herein are the confidential and proprietary property of Global Supply LLC




T27 Drive



PART NUMBER	LENGTH
25C16XBCHO	1/4
25C20XBCHO	5/16
25C24XBCHO	3/8
25C32XBCHO	1/2
25C40XBCHO	5/8
25C48XBCHO	3/4
25C64XBCHO	1"
25C80XBCHO	1 1/4
25C96XBCHO	1 1/2
25C112XBCHO	1 3/4
25C128XBCHO	2"
25C160XBCHO	2 1/2



NOTES:
 1. INTERPRET DRAWINGS PER ASME Y14.5M-1994 STANDARD.
 2. DIMENSIONS & TOLERANCES PER ANSI/ASME B18.3
 3. ROHS AND REACH COMPLIANT

DRAWING SCALE:		MATERIAL:		DESCRIPTION:							
STANDARD		STEEL GRADE 2H		1/4-20 6-LOBE (Torx) BUTTON HEAD CAP SCREW							
TOLERANCES: <i>Unless specified otherwise, all dimensions are in inches</i>		FINISH:		PART NUMBER:							
<table border="0"> <tr> <td>x.xxx</td> <td>+/- 0.005</td> </tr> <tr> <td>x.xx</td> <td>+/- 0.010</td> </tr> <tr> <td>x.x</td> <td>+/- 0.010</td> </tr> </table>		x.xxx	+/- 0.005	x.xx	+/- 0.010	x.x	+/- 0.010	BLACK OXIDE		25CXXXBCHO	
x.xxx	+/- 0.005										
x.xx	+/- 0.010										
x.x	+/- 0.010										
DRAWN BY:	L.CLARY		FSCM No.		 <p>Global Supply LLC WORLDWIDE SUPPLIER OF ELECTRONIC HARDWARE, FASTENERS & COMPONENTS <small>500 Division Street, Campbell, CA 95008-6906 Tel: 408 960 0370 Fax: 408 960 0375 Web: www.globalsupply.com</small></p>						
REV:	APPROVAL	67012									
INITIAL RELEASE	LJA	ECCN									
		EAR99 = NLR (No License Required)									