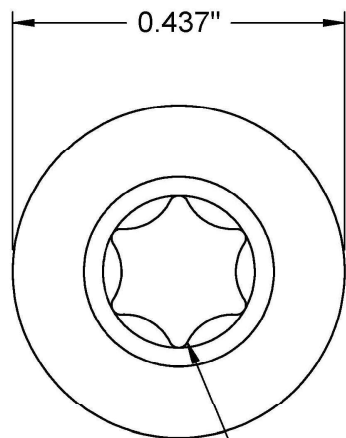
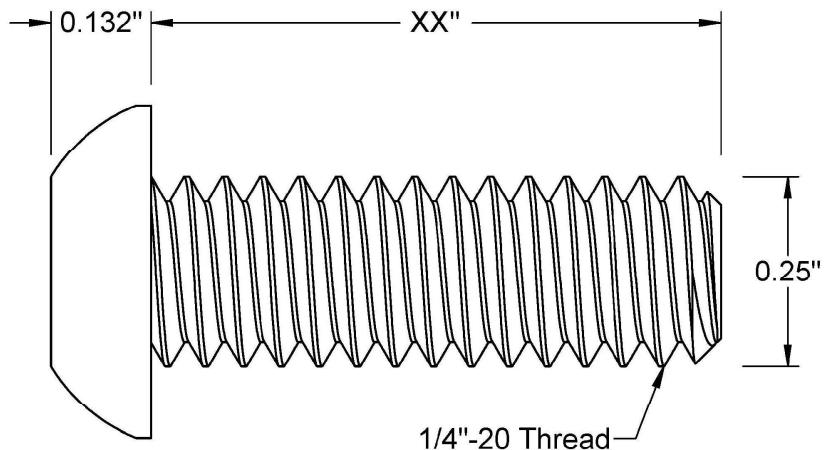


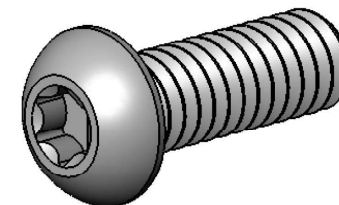
This drawing and the information contained herein are the confidential and proprietary property of Global Supply LLC




T27 Drive



PART NUMBER	LENGTH
25C16XBCSP	1/4
25C24XBCSP	3/8
25C28XBCSP	7/16
25C32XBCSP	1/2
25C40XBCSP	5/8
25C48XBCSP	3/4
25C56XBCSP	7/8
25C64XBCSP	1
25C80XBCSP	1 1/4
25C112XBCSP	1 3/4
25C128XBCSP	2
25C224XBCSP	3 1/2



NOTES:
 1. INTERPRET DRAWINGS PER ASME Y14.5M-1994 STANDARD.
 2. DIMENSIONS & TOLERANCES PER ANSI/ASME B18.3
 3. ROHS AND REACH COMPLIANT

DRAWING SCALE: STANDARD		MATERIAL: STAINLESS STEEL	DESCRIPTION: 1/4-20 6-LOBE (Torx) BUTTON HEAD CAP SCREW
TOLERANCES: <i>Unless specified otherwise, all dimensions are in inches</i>	x.xxx +/- 0.005 x.xx +/- 0.010 x.x +/- 0.010	FINISH: PASSIVATE	PART NUMBER: 25CXXXBCSP
DRAWN BY: L.CLARY	FSCM No. 67012		 Global Supply LLC WORLDWIDE SUPPLIER OF ELECTRONIC HARDWARE, FASTENERS & COMPONENTS <small>500 Division Street, Campbell, CA 95008-6906 Tel: 408 960 0370 Fax: 408 960 0375 Web: www.globalsupply.com</small>
REV:			
INITIAL RELEASE	LJA	Sep 3, 2011	
A	LJA	Aug 29, 2014	
B	LJA	Apr 17, 2018	
		ECCN EAR99 = NLR (No License Required)	