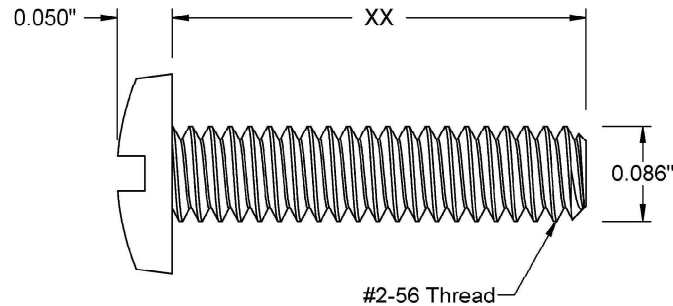
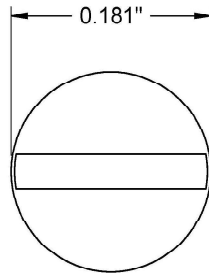



This drawing and the information contained herein are the confidential and proprietary property of Global Supply LLC



PART NUMBER	LENGTH
2C6MIBN	3/32
2C8MIBN	1/8
2C10MIBN	5/32
2C12MIBN	3/16
2C16MIBN	1/4
2C18MIBN	9/32
2C20MIBN	5/16
2C24MIBN	3/8
2C25MIBN	25/64
2C28MIBN	7/16
2C32MIBN	1/2
2C36MIBN	9/16
2C40MIBN	5/8

NOTES:

1. INTERPRET DRAWINGS PER ASME Y14.5M-1994 STANDARD.
2. DIMENSIONS & TOLERANCES PER ANSI/ASME B18.6.3
3. ROHS AND REACH COMPLIANT

DRAWING SCALE:			MATERIAL:		DESCRIPTION:	
STANDARD			NYLON		#2-56 BINDING SLOT HEAD MACHINE SCREW	
TOLERANCES: <i>Unless specified otherwise, all dimensions are in inches</i>		x.xxx +/- 0.005 x.xx +/- 0.010 x.x +/- 0.010	FINISH:		PART NUMBER:	
			PLAIN		2CXXMIBN	
DRAWN BY:		L.CLARY		FSCM No. 67012		<div></div> <div>Global Supply LLC WORLDWIDE SUPPLIER OF ELECTRONIC HARDWARE, FASTENERS & COMPONENTS <small>500 Division Street, Campbell, CA 95008-6906 Tel: 408 960 0370 Fax: 408 960 0375 Web: www.globalsupply.com</small></div>
REV:		APPROVAL	DATE:			
INITIAL RELEASE		LJA	Apr 5, 2018	ECCN EAR99 = NLR (No License Required)		