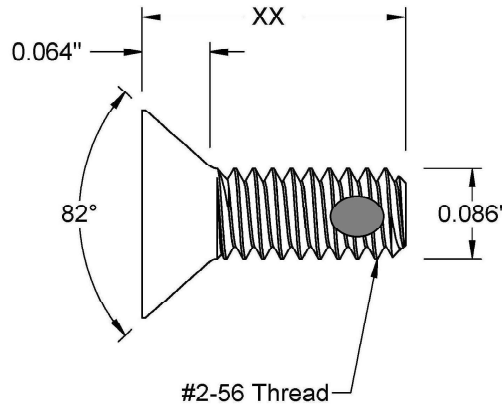
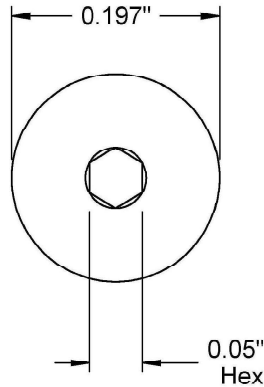
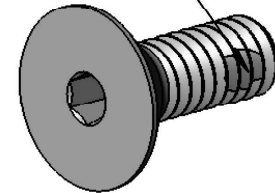


This drawing and the information contained herein are the confidential and proprietary property of Global Supply LLC




PART NUMBER	LENGTH
2C8SFCSP/SPA	1/8
2C12SFCSP/SPA	3/16
2C16SFCSP/SPA	1/4
2C20SFCSP/SPA	5/16
2C24SFCSP/SPA	3/8
2C32SFCSP/SPA	1/2
2C40SFCSP/SPA	5/8
2C48SFCSP/SPA	3/4
2C56SFCSP/SPA	7/8
2C64SFCSP/SPA	1

Nylon Patch



1. INTERPRET DRAWINGS PER ASME Y14.5M-1994 STANDARD.
2. DIMENSIONS & TOLERANCES PER ANSI/ASME B18.2.1.
3. SELF-LOCKING ELEMENT PATCH INTERPRET PER MIL-DTL-18240
4. ROHS AND REACH COMPLIANT

DRAWING SCALE:		MATERIAL:		DESCRIPTION:							
STANDARD		STAINLESS STEEL		#2-56 SOCKET FLAT HEAD CAP SCREW W/NYLOK PATCH							
TOLERANCES: <i>Unless specified otherwise, all dimensions are in inches</i>		FINISH:		PART NUMBER:							
<table border="0"> <tr> <td>x.xxx</td> <td>+/- 0.005</td> </tr> <tr> <td>x.xx</td> <td>+/- 0.010</td> </tr> <tr> <td>x.x</td> <td>+/- 0.010</td> </tr> </table>		x.xxx	+/- 0.005	x.xx	+/- 0.010	x.x	+/- 0.010	PASSIVATE		2CXXSFCSP/SPA	
x.xxx	+/- 0.005										
x.xx	+/- 0.010										
x.x	+/- 0.010										
DRAWN BY:	L.CLARY		FSCM No.		 <p>Global Supply LLC WORLDWIDE SUPPLIER OF ELECTRONIC HARDWARE, FASTENERS & COMPONENTS 500 Division Street, Campbell, CA 95008-6906 Tel: 408 960 0370 Fax: 408 960 0375 Web: www.globalsupply.com</p>						
REV:	APPROVAL	DATE:	67012								
INITIAL RELEASE	LJA	Feb 6, 2015									
A	LJA	Apr 17, 2018	ECCN								
			EAR99 = NLR (No License Required)								