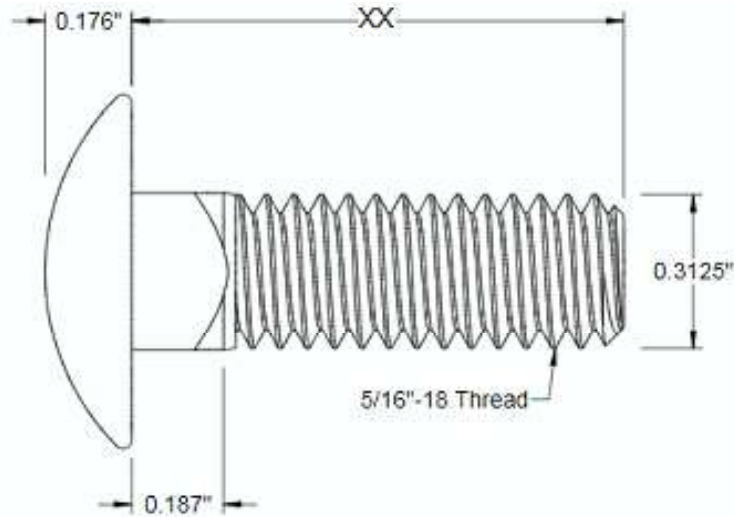
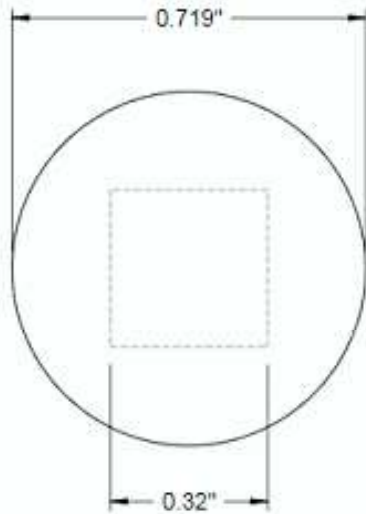



This drawing and the information contained herein are the confidential and proprietary property of Global Supply LLC



PART NUMBER	LENGTH
31C4BCR2Z	1/16
31C8BCR2Z	1/8
31C16BCR2Z	1/4
31C20BCR2Z	5/16
31C24BCR2Z	3/8
31C32BCR2Z	1/2
31C40BCR2Z	5/8
31C48BCR2Z	3/4
31C56BCR2Z	7/8
31C64BCR2Z	1
31C96BCR2Z	1 1/2
31C128BCR2Z	2
31C160BCR2Z	2 1/2

- NOTES:
 1. INTERPRET DRAWINGS PER ASME Y14.5M-1994 STANDARD.
 2. DIMENSIONS & TOLERANCES PER ANSI/ASME B18.5

DRAWING SCALE:		MATERIAL:	DESCRIPTION:
STANDARD		STEEL	5/16-18 CARRIAGE BOLT
TOLERANCES: <i>Unless specified otherwise, all dimensions are in inches</i>	x.xxx +/- 0.005 x.xx +/- 0.010 x.x +/- 0.010	FINISH:	PART NUMBER:
		ZINC I	31CXXBCR2Z
DRAWN BY:	LCLARY		 Global Supply LLC WORLDWIDE SUPPLIER OF ELECTRONIC HARDWARE, FASTENERS & COMPONENTS <small>500 Division Street, Campbell, CA 95008-6906 Tel: 408 960 0370 Fax: 408 960 0375 Web: www.globalsupply.com</small>
REV:	APPROVAL	DATE:	
INITIAL RELEASE	LJA	Jun 6, 2018	
		FSCM No. 67012	
		ECCN	
		EAR99 = NLR (No License Required)	