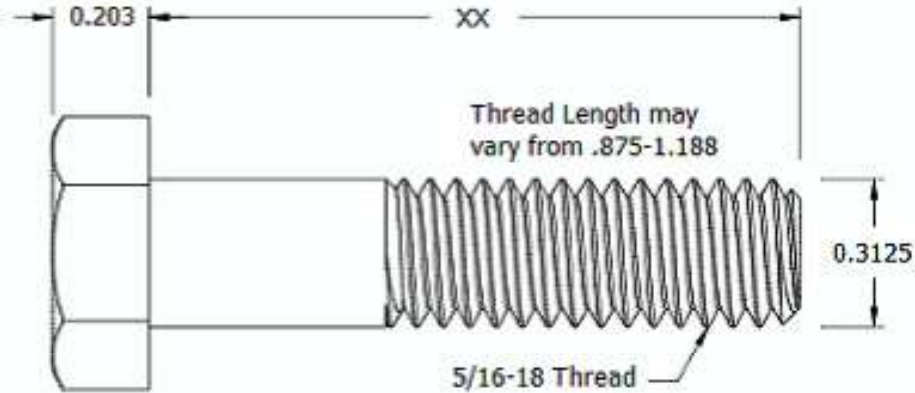
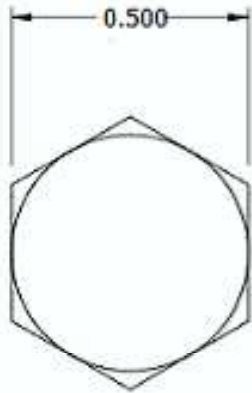
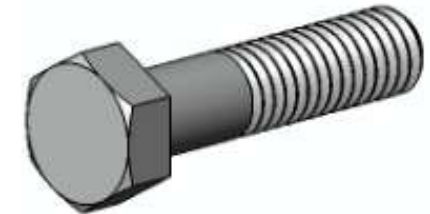



This drawing and the information contained herein are the confidential and proprietary property of Global Supply LLC



PART NUMBER	LENGTH
31C64HCS20	1
31C80HCS20	1 1/4
31C88HCS20	1 3/8
31C96HCS20	1 1/2
31C104HCS20	1 5/8
31C112HCS20	1 3/4
31C128HCS20	2
31C160HCS20	2 1/2
31C192HCS20	3
31C224HCS20	3 1/2
31C256HCS20	4
31C320HCS20	5
31C384HCS20	6



NOTES:
 1. INTERPRET DRAWINGS PER ASME Y14.5M-1994 STANDARD.
 2. DIMENSIONS & TOLERANCES PER ANSI/ASME B18.2.1
 3. ROHS AND REACH COMPLIANT

DRAWING SCALE:		MATERIAL:	DESCRIPTION:
STANDARD		STEEL	5/16-18 HEX HEAD CAP SCREW
TOLERANCES: <i>Unless specified otherwise, all dimensions are in inches</i>	x.xxx +/- 0.005 x.xx +/- 0.010 x.x +/- 0.010	FINISH:	PART NUMBER:
		BLACK OXIDE	31CXXHCS20
DRAWN BY:	LCLARY		 Global Supply LLC WORLDWIDE SUPPLIER OF ELECTRONIC HARDWARE, FASTENERS & COMPONENTS <small>500 Division Street, Campbell, CA 95008-6906 Tel: 408 960 0370 Fax: 408 960 0375 Web: www.globalsupply.com</small>
REV:	APPROVAL	DATE:	
INITIAL RELEASE	LJA	May 31, 2018	
			FSCM No. 67012
			ECCN EAR99 = NLR (No License Required)