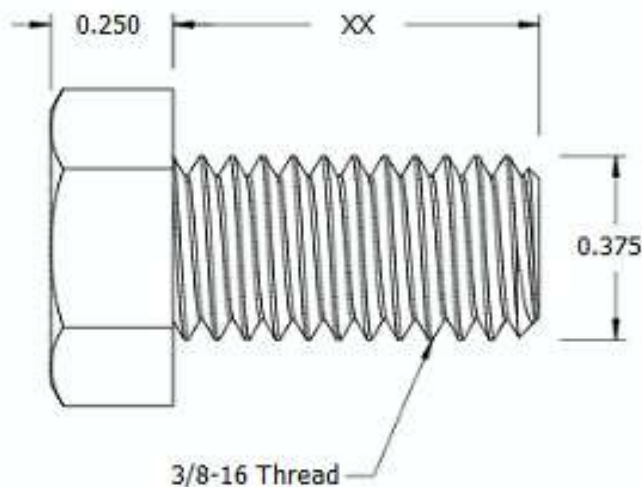
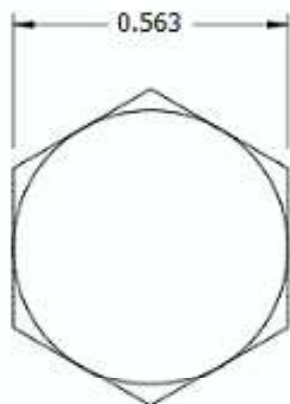
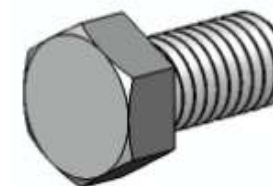


This drawing and the information contained herein are the confidential and proprietary property of Global Supply LLC




PART NUMBER	LENGTH
37C8HCS2Z	1/8
37C12HCS2Z	3/16
37C16HCS2Z	1/4
37C20HCS2Z	5/16
37C24HCS2Z	3/8
37C28HCS2Z	7/16
37C32HCS2Z	1/2
37C36HCS2Z	9/16
37C40HCS2Z	5/8
37C48HCS2Z	3/4
37C56HCS2Z	7/8
37C64HCS2Z	1



NOTES:

1. INTERPRET DRAWINGS PER ASME Y14.5M-1994 STANDARD.
2. DIMENSIONS & TOLERANCES PER ANSI/ASME B18.2.1

DRAWING SCALE:			MATERIAL:		DESCRIPTION:		
STANDARD			STEEL		3/8-16 HEX HEAD CAP SCREW		
TOLERANCES: <i>Unless specified otherwise, all dimensions are in inches</i>		x.xxx +/- 0.005 x.xx +/- 0.010 x.x +/- 0.010		FINISH:		PART NUMBER:	
				ZINC I		37CXXHCS2Z	
DRAWN BY:		LCLARY		FSCM No.		<div><div>Global Supply LLC</div><div>WORLDWIDE SUPPLIER OF ELECTRONIC HARDWARE, FASTENERS & COMPONENTS</div><div>500 Division Street, Campbell, CA 95008-6906 Tel: 408 960 0370 Fax: 408 960 0375 Web: www.globalsupply.com</div></div>	
REV:		APPROVAL		DATE:			
INITIAL RELEASE		LJA		May 31, 2018			
				ECCN			
				EAR99 = NLR (No License Required)			