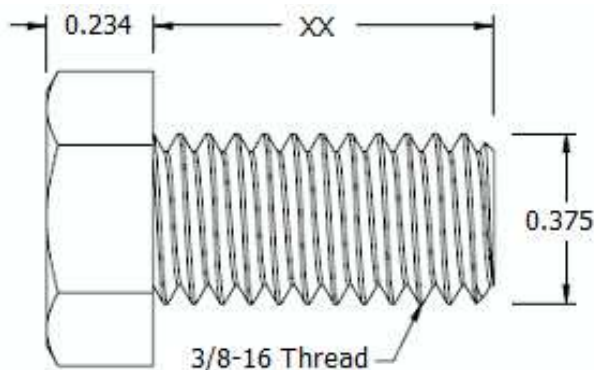
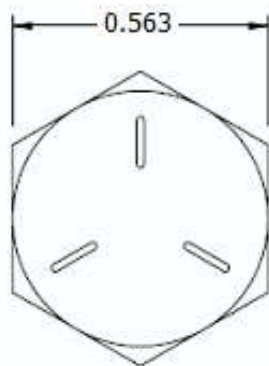
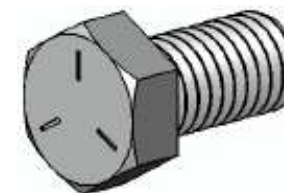


This drawing and the information contained herein are the confidential and proprietary property of Global Supply LLC



PART NUMBER	LENGTH
37C8HCS5Z	1/8
37C12HCS5Z	3/16
37C16HCS5Z	1/4
37C20HCS5Z	5/16
37C24HCS5Z	3/8
37C28HCS5Z	7/16
37C32HCS5Z	1/2
37C36HCS5Z	9/16
37C40HCS5Z	5/8
37C44HCS5Z	11/16
37C48HCS5Z	3/4
37C56HCS5Z	7/8
37C64HCS5Z	1



NOTES:
 1. INTERPRET DRAWINGS PER ASME Y14.5M-1994 STANDARD.
 2. DIMENSIONS & TOLERANCES PER ANSI/ASME B18.2.1

DRAWING SCALE:		MATERIAL:	DESCRIPTION:
STANDARD		GRADE 5 STEEL	#3/8-16 HEX HEAD CAP SCREW
TOLERANCES: <i>Unless specified otherwise, all dimensions are in inches</i>	x.xxx +/- 0.005 x.xx +/- 0.010 x.x +/- 0.010	FINISH:	PART NUMBER:
		ZINC I	37CXXHCS5Z
DRAWN BY:	LCLARY	FSCM No.	 Global Supply LLC WORLDWIDE SUPPLIER OF ELECTRONIC HARDWARE, FASTENERS & COMPONENTS <small>500 Division Street, Campbell, CA 95008-6906 Tel: 408 960 0370 Fax: 408 960 0375 Web: www.globalsupply.com</small>
REV:	APPROVAL	DATE:	
INITIAL RELEASE	LJA	Jun 1, 2018	
		ECCN	
		EAR99 = NLR (No License Required)	