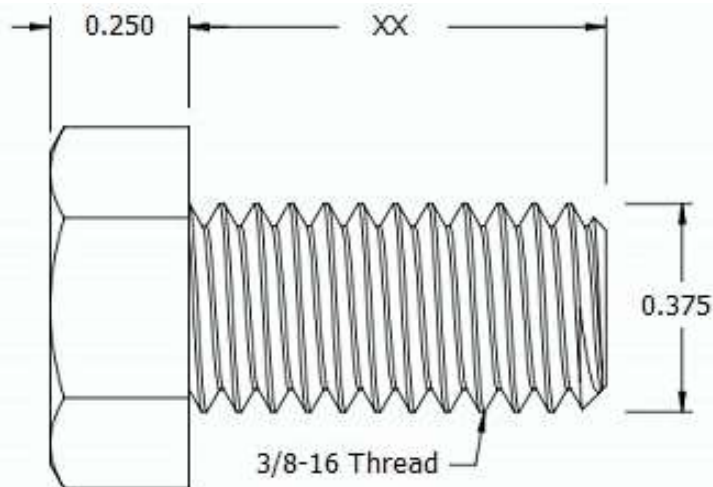
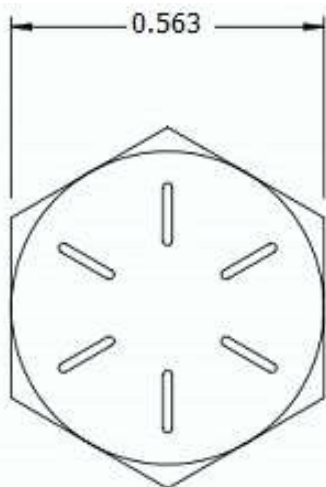



This drawing and the information contained herein are the confidential and proprietary property of Global Supply LLC



PART NUMBER	LENGTH
37C4HCS8Z	1/16
37C8HCS8Z	1/8
37C12HCS8Z	3/16
37C16HCS8Z	1/4
37C20HCS8Z	5/16
37C28HCS8Z	7/16
37C32HCS8Z	1/2
37C40HCS8Z	5/8
37C48HCS8Z	3/4
37C56HCS8Z	7/8
37C64HCS8Z	1

NOTES:

1. INTERPRET DRAWINGS PER ASME Y14.5M-1994 STANDARD.
2. DIMENSIONS & TOLERANCES PER ANSI/ASME B18.2.1

DRAWING SCALE:			MATERIAL:		DESCRIPTION:	
STANDARD			GRADE 8 STEEL		3/8-16 HEX HEAD CAP SCREW	
TOLERANCES: <i>Unless specified otherwise, all dimensions are in inches</i>		x.xxx +/- 0.005	FINISH:		PART NUMBER:	
		x.xx +/- 0.010	ZINC I		37CXXHCS8Z	
		x.x +/- 0.010				
DRAWN BY:		LCLARY		FSCM No.		<div></div> <div>Global Supply LLC</div> <div>WORLDWIDE SUPPLIER OF ELECTRONIC HARDWARE, FASTENERS & COMPONENTS</div> <div>500 Division Street, Campbell, CA 95008-6906 Tel: 408 960 0370 Fax: 408 960 0375 Web: www.globalsupply.com</div>
REV:		APPROVAL	DATE:	67012		
INITIAL RELEASE		LJA	Jun 5, 2018			
				ECCN		
				EAR99 = NLR (No License Required)		