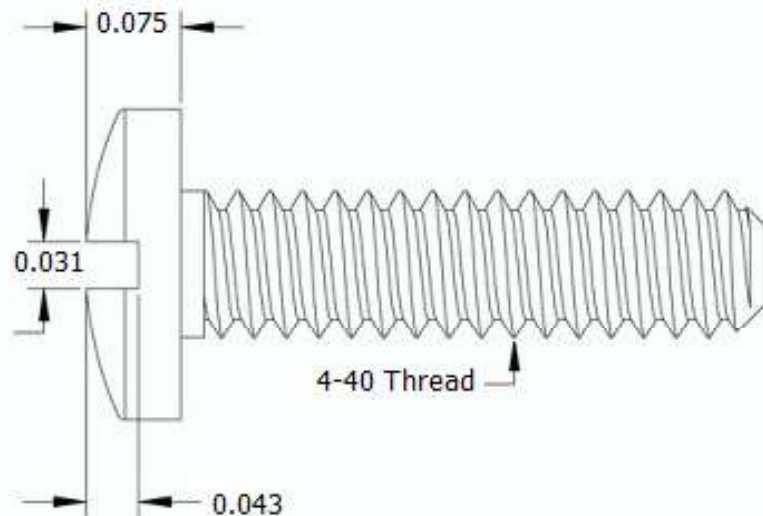
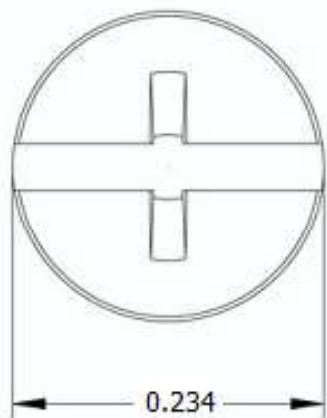



This drawing and the information contained herein are the confidential and proprietary property of Global Supply LLC



PART NUMBER	LENGTH
4C48MCBN	3/4
4C56MCBN	7/8
4C64MCBN	1
4C68MCBN	1 1/16
4C72MCBN	1 1/8
4C76MCBN	1 3/16
4C80MCBN	1 1/4
4C88MCBN	1 3/8
4C96MCBN	1 1/2
4C104MCBN	1 5/8
4C112MCBN	1 3/4

NOTES:

1. INTERPRET DRAWINGS PER ASME Y14.5M-1994 STANDARD.
2. DIMENSIONS & TOLERANCES PER ANSI/ASME B18.6.3.
3. ROHS AND REACH COMPLIANT

DRAWING SCALE:			MATERIAL:		DESCRIPTION:	
STANDARD			NYLON		4-40 COMBO BINDER HEAD MACHINE SCREW	
TOLERANCES: <i>Unless specified otherwise, all dimensions are in inches</i>		x.xxx +/- 0.005 x.xx +/- 0.010 x.x +/- 0.010		FINISH:		
		PLAIN		PART NUMBER:		
				4CXXMCBN		
DRAWN BY:		L CLARY		FSCM No.		
REV:		APPROVAL		67012		
DATE:						
INITIAL RELEASE		LJA		ECCN		
				EAR99 = NLR (No License Required)		
<div><div>Global Supply LLC WORLDWIDE SUPPLIER OF ELECTRONIC HARDWARE, FASTENERS & COMPONENTS 500 Division Street, Campbell, CA 95008-6906 Tel: 408 960 0370 Fax: 408 960 0375 Web: www.globalsupply.com</div></div>						