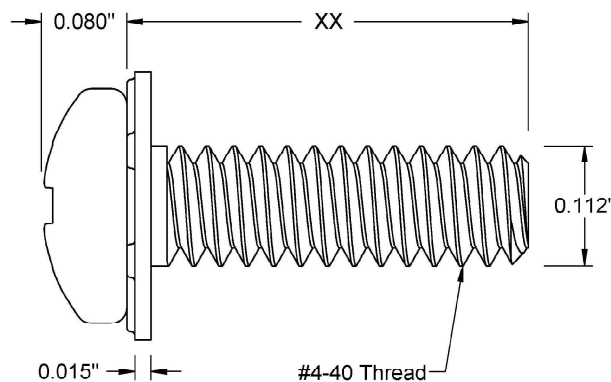
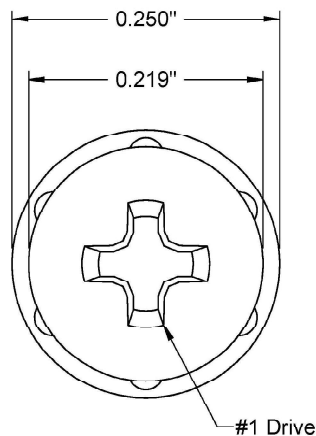



This drawing and the information contained herein are the confidential and proprietary property of Global Supply LLC



| PART NUMBER | LENGTH |
|---------------|--------|
| 4C8MPP3P/SSQ | 1/8 |
| 4C12MPP3P/SSQ | 3/16 |
| 4C16MPP3P/SSQ | 1/4 |
| 4C20MPP3P/SSQ | 5/16 |
| 4C24MPP3P/SSQ | 3/8 |
| 4C28MPP3P/SSQ | 7/16 |
| 4C32MPP3P/SSQ | 1/2 |
| 4C40MPP3P/SSQ | 5/8 |
| 4C48MPP3P/SSQ | 3/4 |
| 4C56MPP3P/SSQ | 7/8 |
| 4C64MPP3P/SSQ | 1 |
| | |
| | |

NOTES:
 1. INTERPRET DRAWINGS PER ASME Y14.5M-1994 STANDARD
 2. DIMENSIONS & TOLERANCES PER ANSI/ASME B18.6.3
 3. ROHS COMPLIANT

| | | | | | |
|---|--|--|---|-----------------|---------------------|
| DRAWING SCALE: STANDARD | | MATERIAL: STAINLESS STEEL 316 | DESCRIPTION: #4-40 PAN HEAD PHILLIPS MACHINE SCREW, SEMS, SQUARE CONE | | |
| TOLERANCES: <i>Unless specified otherwise, all dimensions are in inches</i> | x.xxx +/- 0.005 x.xx +/- 0.010 x.x +/- 0.010 | FINISH: PASSIVATE | PART NUMBER: 4CXXMPP3P/SSQ | | |
| DRAWN BY: L.CLARY | FSCM No. 67012 ECCN EAR99 = NLR (No License Required) | |  Global Supply LLC WORLDWIDE SUPPLIER OF ELECTRONIC HARDWARE, FASTENERS & COMPONENTS <small>500 Division Street, Campbell, CA 95008-6906 Tel: 408 960 0370 Fax: 408 960 0375 Web: www.globalsupply.com</small> | | |
| REV: | | | | APPROVAL | DATE: |
| INITIAL RELEASE | | | | LJA | Feb 8, 2012 |
| A | | | | LJA | Apr 29, 2014 |
| B | LJA | Feb 20, 2018 | | | |