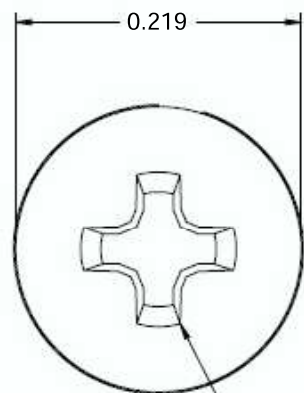
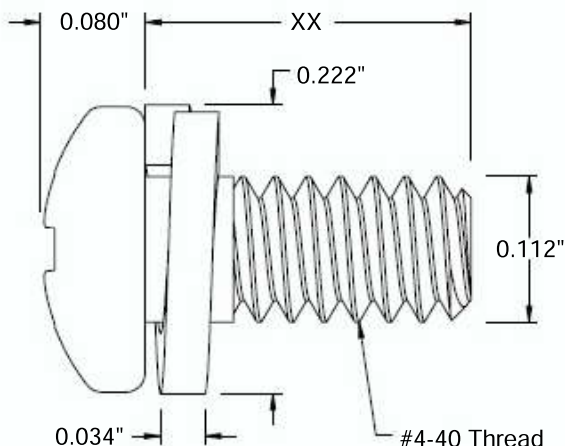


This drawing and the information contained herein are the confidential and proprietary property of Global Supply LLC




#1 Drive



PART NUMBER	LENGTH
4C8MPPSP/SLK	1/8
4C12MPPSP/SLK	3/16
4C16MPPSP/SLK	1/4
4C20MPPSP/SLK	5/16
4C24MPPSP/SLK	3/8
4C28MPPSP/SLK	7/16
4C32MPPSP/SLK	1/2
4C40MPPSP/SLK	5/8
4C48MPPSP/SLK	3/4
4C56MPPSP/SLK	7/8
4C64MPPSP/SLK	1

NOTES:

1. INTERPRET DRAWINGS PER ASME Y14.5M-1994 STANDARD.
2. DIMENSIONS & TOLERANCES PER ANSI/ASME B18.13
3. ROHS AND REACH COMPLIANT

DRAWING SCALE:			MATERIAL:		DESCRIPTION:		
STANDARD			STAINLESS STEEL		#4-40 PAN HEAD PHIL M/S, WITH SPLIT LOCK SEMS		
TOLERANCES: <i>Unless specified otherwise, all dimensions are in inches</i>		x.xxx +/- 0.005 x.xx +/- 0.010 x.x +/- 0.010		FINISH:		PART NUMBER:	
				PASSIVATE		4CXXMPPSP/SLK	
DRAWN BY:		L. CLARY		FSCM No.		<div><div>Global Supply LLC</div><div>WORLDWIDE SUPPLIER OF ELECTRONIC HARDWARE, FASTENERS & COMPONENTS</div><div>500 Division Street, Campbell, CA 95008-6906 Tel: 408 960 0370 Fax: 408 960 0375 Web: www.globalsupply.com</div></div>	
REV:		APPROVAL		DATE:			
INITIAL RELEASE		LJA		May 3, 2018			
				ECCN			
				EAR99 = NLR (No License Required)			