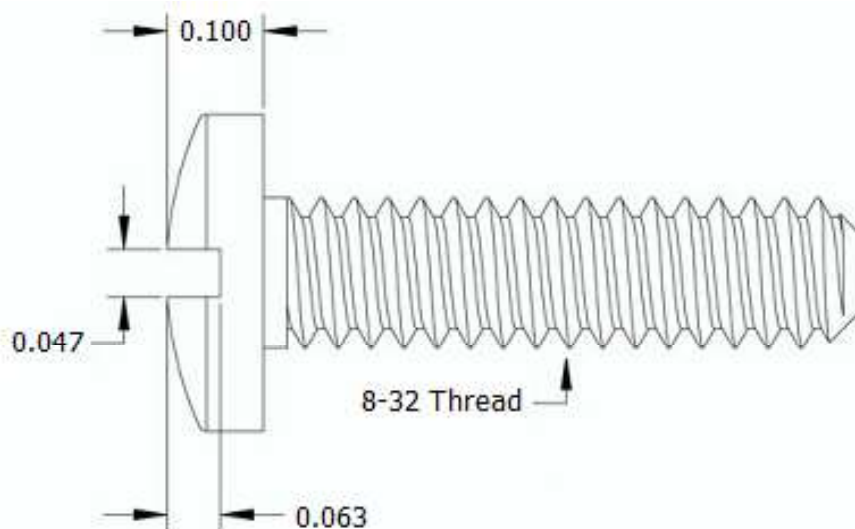
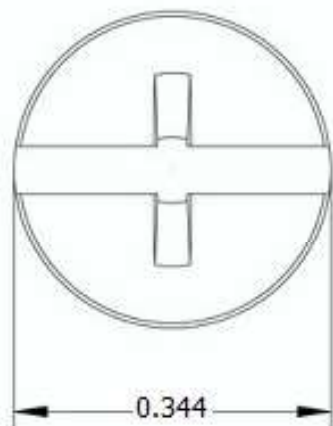



This drawing and the information contained herein are the confidential and proprietary property of Global Supply LLC



PART NUMBER	LENGTH
8C8MCBN	1/8
8C12MCBN	3/16
8C16MCBN	1/4
8C18MCBN	9/32
8C20MCBN	5/16
8C24MCBN	3/8
8C28MCBN	7/16
8C32MCBN	1/2
8C40MCBN	5/8
8C48MCBN	3/4
8C56MCBN	7/8
8C64MCBN	1
8C72MCBN	1 1/8

**NOTES:**

1. INTERPRET DRAWINGS PER ASME Y14.5M-1994 STANDARD.
2. DIMENSIONS & TOLERANCES PER ANSI/ASME B18.6.3.
3. ROHS AND REACH COMPLIANT

DRAWING SCALE:			MATERIAL:		DESCRIPTION:		
STANDARD			NYLON		8-32 COMBO BINDER HEAD MACHINE SCREW		
TOLERANCES: <i>Unless specified otherwise, all dimensions are in inches</i>		x.xxx +/- 0.005 x.xx +/- 0.010 x.x +/- 0.010		FINISH:		PART NUMBER:	
				PLAIN		8CXXMCBN	
DRAWN BY:		L CLARY		FSCM No.		<div><div>Global Supply LLC</div><div>WORLDWIDE SUPPLIER OF ELECTRONIC HARDWARE, FASTENERS &amp; COMPONENTS</div><div>500 Division Street, Campbell, CA 95008-6906 Tel: 408 960 0370 Fax: 408 960 0375 Web: www.globalsupply.com</div></div>	
REV:		APPROVAL		DATE:			
INITIAL RELEASE		LJA		Jul 6, 2018			
				ECCN			
				EAR99 = NLR (No License Required)			