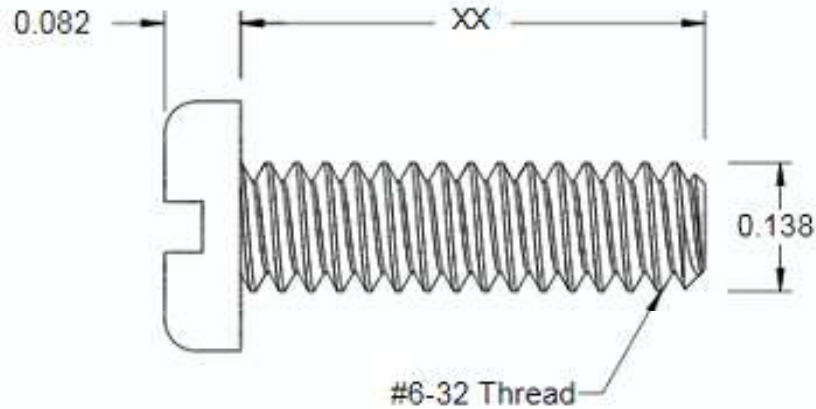
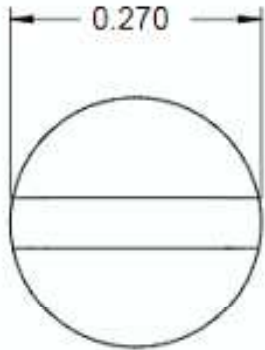



This drawing and the information contained herein are the confidential and proprietary property of Global Supply LLC



PART NUMBER	LENGTH
D232-53-38	1/4
D232-55-38	3/8
D232-57-38	1/2



NOTES:  
 1. INTERPRET DRAWINGS PER ASME Y14.5M-1994 STANDARD.  
 2. DIMENSIONS & TOLERANCES PER ANSI/ASME B18.6.3.  
 3. ROHS AND REACH COMPLIANT

<b>DRAWING SCALE:</b>		<b>MATERIAL:</b>		<b>DESCRIPTION:</b>	
<b>STANDARD</b>		<b>FIBERGLASS</b>		<b>6-32 SLOTTED PAN HEAD MACHINE SCREW</b>	
<b>TOLERANCES:</b> <i>Unless specified otherwise, all dimensions are in inches</i>		<b>FINISH:</b>		<b>PART NUMBER:</b>	
x.xxx +/- 0.005 x.xx +/- 0.010 x.x +/- 0.010				<b>D232-5X-38</b>	
<b>DRAWN BY:</b>	L CLARY		<b>FSCM No.</b> <b>67012</b>		 <b>Global Supply LLC</b> WORLDWIDE SUPPLIER OF ELECTRONIC HARDWARE, FASTENERS & COMPONENTS <small>500 Division Street, Campbell, CA 95008-6906          Tel: 408 960 0370 Fax: 408 960 0375 Web: www.globalsupply.com</small>
<b>REV:</b>	<b>APPROVAL</b>	<b>DATE:</b>			
INITIAL RELEASE	LJA	Aug 30, 2018			
			<b>ECCN</b>		
			EAR99 = NLR (No License Required)		