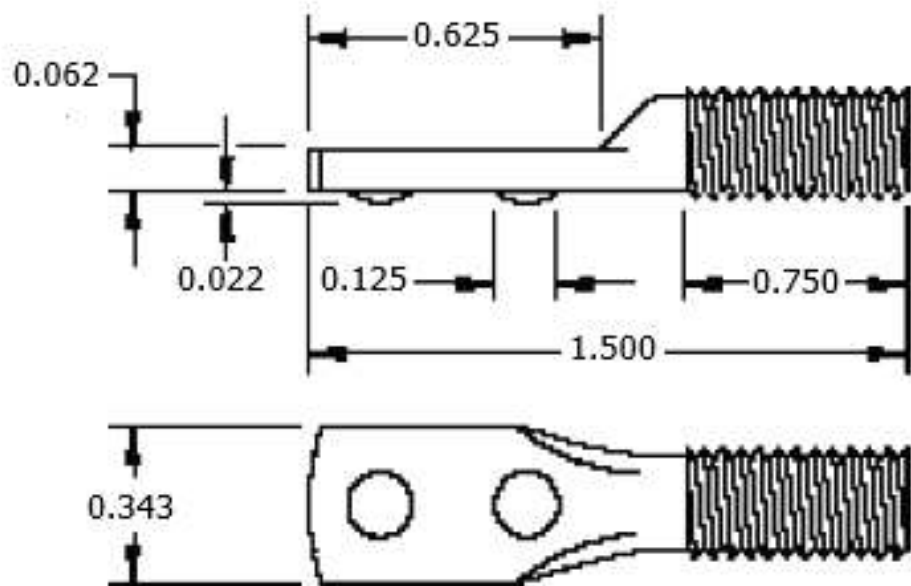



This drawing and the information contained herein are the confidential and proprietary property of Global Supply LLC



# NOTES:

1. INTERPRET DRAWINGS PER ASME Y14.5M-1994 STANDARD.
2. DIMENSIONS & TOLERANCES PER ASME B1.1-2003.
3. ROHS AND REACH COMPLIANT

DRAWING SCALE:			MATERIAL:	DESCRIPTION:
STANDARD			LOW CARBON STEEL	#10-32 X 1 1/2 STRAIGHT SPADED WELD SCREW
TOLERANCES: <i>Unless specified otherwise, all dimensions are in inches</i>		x.xxx +/- 0.005 x.xx +/- 0.010 x.x +/- 0.010	FINISH:  PLAIN	PART NUMBER:  PD1624
DRAWN BY:	LCLARY		FCSM No. 67012	<div><div>Global Supply LLC</div><div>WORLDWIDE SUPPLIER OF ELECTRONIC HARDWARE, FASTENERS &amp; COMPONENTS</div><div>500 Division Street, Campbell, CA 95008-6906 Tel: 408 960 0370 Fax: 408 960 0375 Web: www.globalsupply.com</div></div>
REV:	APPROVAL	DATE:		
INITIAL REV	LJA	May 24, 2018		